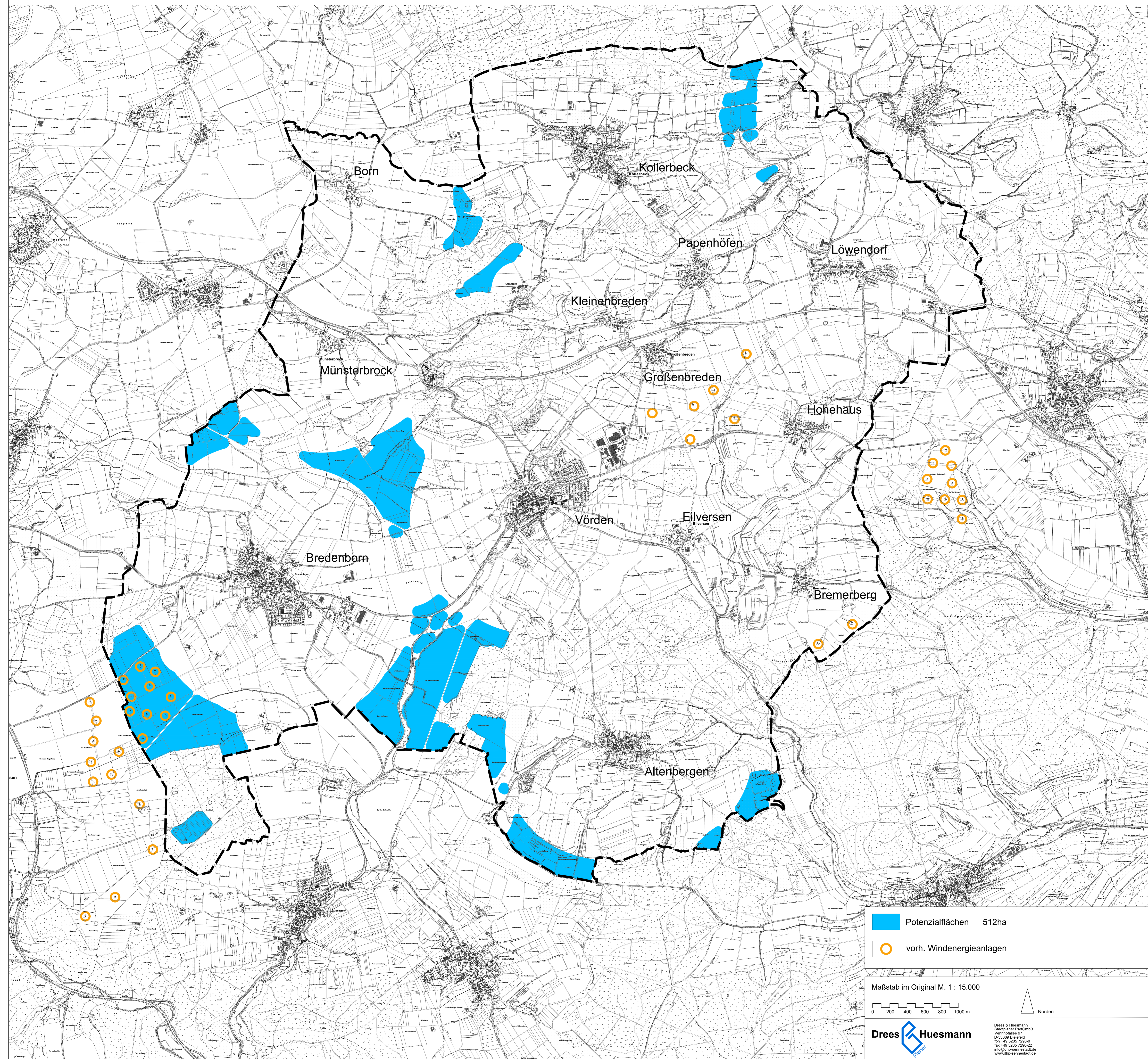






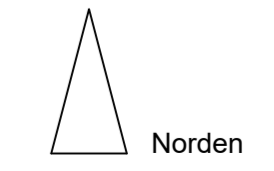
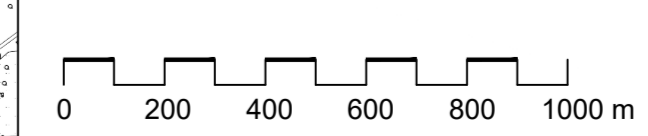
Windenergieuntersuchung der Stadt Marienmünster

8A. Karte Potenzialflächen
Wald + Modellflugplatz + 1.100m Abstand Vorsorge



-  Potenzialflächen 512ha
-  vorh. Windenergieanlagen

Maßstab im Original M. 1 : 15.000



Drees & Huesmann
Stadtplaner PartGmbH
Vierhöfallee 97
D-33689 Bielefeld
fon +49 5205 7298-0
fax +49 5205 7298-22
info@dhp-sennestadt.de
www.dhp-sennestadt.de